



	FY'10	FY'09
<b>Child Health Program</b>		
Children receiving child health services including dental, physicals, labs, care coordination, informing and transportation in Johnson and Iowa counties	7,309	13,921
Children receiving Medicaid in Johnson County; responsible for confirming medical and dental homes; and scheduling visits	5926	5538
Iowa County	844	790
<b>Maternal Health Program</b>	<b>FY'10</b>	<b>FY'09</b>
Women receiving maternal health services including dental, health education, care coordination, social work, nutrition, Medicaid risk assessment, Presumptive Medicaid, and transportation in Johnson & Iowa counties	655	839
Maternal Health clinic caseload	126	172
<b>Iowa Infant Immunization Initiative (I-4)</b>	<b>FY'10</b>	<b>FY'09</b>
Children immunized in Johnson County	631	717
<b>Head Start</b>	<b>FY'10</b>	<b>FY'09</b>
Children served in Johnson County	363	300
Iowa County	77	30
<b>Healthy And Well Kids in Iowa (HAWK-I)</b>	<b>FY'10</b>	<b>FY'09</b>
Children receiving HAWK-I services in Johnson County	520	398
Iowa County	130	90
<b>I-Smile Dental Home Program</b>	<b>FY'10</b>	<b>FY'09</b>
Clients receiving direct dental services (Johnson & Iowa Counties)	1954	1,422
Dental care coordination services (Johnson & Iowa counties)	200	460

*Promoting Health. Preventing Harm.*

## Annual Report Fiscal Year 2010



### JOHNSON COUNTY PUBLIC HEALTH MISSION

#### Vision

Johnson County Public Health leads community prevention efforts by advocating for optimal health of all citizens, forging partnerships and assuring access to health care.

#### Mission

Johnson County Public Health provides leadership in promoting environmental, personal and public health through community based programs in health promotion, disease prevention, and assurance of access to primary care.

**Director: Douglas Beardsley, MPH, CPHA**

**Deputy Director: Tricia Kitzmann, MPH**

Johnson County Public Health  
855 S. Dubuque Street, Suite 217  
Iowa City, IA 52240  
319-356-6040 phone  
319-356-6044 fax

## Letter From The Director

FY 2010 began with a roar as we were in full blown H1N1 response mode. JCPH staff stepped up to the challenge of working through this incident while continuing to provide all regular services. I'd like to, once again, publicly thank the staff for pulling together under stressful times.

The beginning of a new decade has brought new opportunities. JCPH was one of 6 local health departments to receive an Iowa Department of Public Health grant to conduct an in-depth self-assessment vis-à-vis the new public health standards. The projects will help determine what the metrics of an accreditation review will look like. Locally, it will provide strategic direction to our Quality Improvement efforts in areas that were identified as not meeting the standards.

2010 also marked the first phase of our Community Health Needs Assessment and Health Improvement Plan (CHNA-HIP) efforts. An assessment team was assembled to collect, examine and organize community health indicators. An extensive collection of data and graphs was assembled and made available to the public. These efforts were made in conjunction with the United Way's assessment and we appreciate their work and data. The latter part of 2010 will see the second and third phases of the CHNA-HIP process as the community selects priorities and sets goals and objectives.

FY 2010 has truly laid the groundwork for the next decade. As we measure ourselves against the public health standards and a new community health plan, we hope to open a new era of service, accountability and results for the protection and promotion of health in Johnson County. Thank you to all who have participated at all levels.

Douglas E. Beardsley, MPH, CPHA

## WIC/MCH DIVISION



Third Row L—R: Judith Gilmore, Joann Bender, Chuck Dufano, Nancy LePeau, Jane Moore, Jennifer Hope, Eileen Tosh. Second Row L—R: Karen Klein Lipman, Nadine Fisher, Erica Wagner, Amy Smith. Front Row L—R: Judy Grecian, Mary Klahn Ramstad, Urmil Aggarwal, Janeen Springer, Wendy Cohen.

Not Pictured: Rita Brown, Iola Feldkamp, Audrey Heath, Kathy Koehler, Lynn Kubit, Hilary Moise, Hiedi Stjarna.

The WIC/Maternal and Child Health (MCH) division advocates for and serves high-risk low-income families. Services available include the Special Supplemental Nutrition Program for Women, Infants and Children (WIC), Child Health, Maternal Health, Immunization, Head Start and the I-Smile Oral Health Program. Programs are focused on provision of or access to preventive health services. High-risk families are assisted with locating and accessing health services based upon individual family resources and program eligibility. Successfully accessing these services promotes overall health and stability within the family. Healthy families contribute to a positive and thriving community.

### Board of Health Members 2009 – 2010

2009 Board of Health	2010 Board of Health
Paul Deaton, Chairperson	Paul Deaton, Chairperson
Kelley Donham, DVM, MS, Vice Chairperson	Kelley Donham, DVM, MS Vice Chairperson
Stuart J. Thomas, MSA Secretary	Stuart J. Thomas, MSA Secretary
Mary Kanak, PhD, RN	Maureen McCue, MD, PhD
Maureen McCue, MD, PhD	Mary Jo Meggers, RN

WIC	FY'10	FY'09
WIC average monthly caseload (service in Johnson, Iowa & Washington counties)	2636	2,659

### Breastfeeding Peer Counseling (as of 3/1/10)

Preparing for budget year 2011 by creating a protocol, obtaining breastfeeding education materials and training staff in Johnson, Iowa and Washington counties

JCPH staff completing course	6	NA
Recruiting and training breastfeeding peer counselors	3	NA

## ENVIRONMENTAL HEALTH Cont'd

<b>Watershed Protection</b>	<b>FY'10</b>	<b>FY'09</b>
Onsite Wastewater Permits Issued	140	122
Onsite Wastewater System Inspections Conducted	444	414
Private Water Well Permits Issued	39	52
Private Water Well Inspections Conducted	91	87
Transient Non-Community Wells Inspected	43	45
Time of Transfer Inspections Conducted	161	NA
<b>Grants to Counties</b>	<b>FY'10</b>	<b>FY'09</b>
Plugged wells	18	16
Renovated wells	2	2
Water samples	83	102
<b>Zoning</b>	<b>FY'10</b>	<b>FY'09</b>
Zoning & subdivision staff reports submitted	22	58
Conditional use staff reports submitted	10	14

The Food Protection program is a contractual program in which the authority to enforce the Iowa Food Code has been delegated to Johnson County Public Health by the Iowa Department of Inspections and Appeals. Johnson County Public Health licenses and inspects a variety of food facilities to ensure compliance with the Food Code.

<b>Food Protection</b>	<b>FY'10</b>	<b>FY'09</b>
Food Licenses Issued	976	809
Food Facility Inspections	1077	1,269

Community Environmental Protection consists of the Tanning, Tattoo, Swimming Pool/Spa, Hotel/Motel and Environmental Nuisance programs. These are contractual programs in which the authority to enforce the applicable Iowa Code chapters has been delegated to Johnson County Public Health by the Iowa Department of Public Health. These facilities are inspected to determine compliance with the regulations set forth in the Iowa Code in an effort to ensure the health and safety of the public.

<b>Environmental Protection</b>	<b>FY'10</b>	<b>FY'09</b>
Tattoo Facility Inspections	9	9
Tanning Facility Inspections	50	54
Pool/Spa Facility Inspections	61	64
Hotel/Motel Facility Inspections	27	25
Nuisance Investigations	143	134

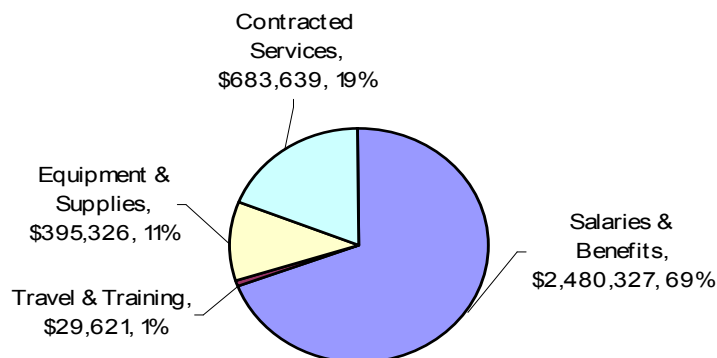
## FY 2010 Board of Health Members



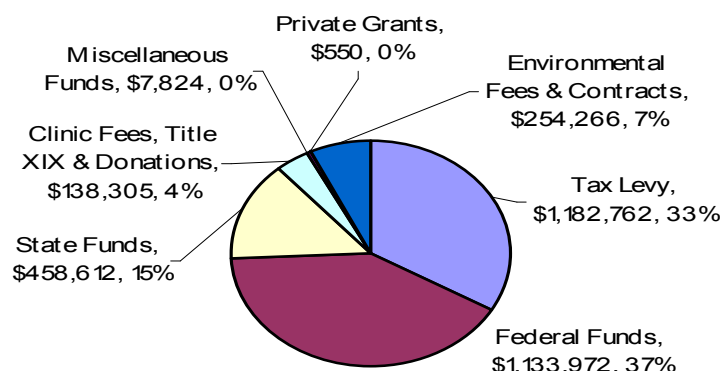
Standing (L-R): Paul Deaton; Maureen McCue. Stuart Thomas; Douglas Beardsley, Director, Johnson County Public Health;  
Seated (L-R) Kelley Donham; Mary Kanak  
Not pictured: Mary Jo Meggers

## FY 2010 Expenditures and Revenues

### FY2010 Expenditures



### FY2010 Revenues



## FY 2010 Grants

Breastfeeding Peer Counseling	\$15,000
Care for Yourself	\$23,200
Grants-to-Counties	\$16,326
HIV CTR & Hepatitis	\$26,250
HIV Prevention—HERR	\$46,161
Immunization Services	\$38,293
Iowa Healthy Communities Initiative	\$28,600
Local Public Health Services	\$278,813
Maternal and Child Health	\$222,107
Modernization	\$30,000
Nutrition Environment Measurement	\$500
Public Health Emergency Preparedness & Response	\$1,029,534
Regional Environmental Health Collaborative	\$6,000
WIC	\$523,343

## ADMINISTRATION DIVISION



Second Row L—R: Karen Bowden, Lonise Norfleet  
 Front Row L—R: Rebecca Stockman, Vicki Riggan, Becky Mills, Douglas Beardsley. Not pictured: Tricia Kitzmann

Administration provides customer service, general reception to the public, and supports the Board of Health through general support activities. Administration is responsible for fiscal management, personnel functions and coordinates grant fund processing. Because Johnson County Public Health often collaborates with other agencies, funding from various grant sources requires administrative processes including tracking grant related correspondence, fiscal transactions and archiving appropriate fiscal documents. The Administrative Division is fully responsible for the Local Public Health Services Contract that provides funds for Board of Health Infrastructure,

## Health Promotion cont'd

and providing an Employee Wellness Program for Johnson County employees.

Health Promotion	FY'10	FY'09
Number of employees who participated in Worksite Wellness Programs	367	336
Participation Rate	78%	71%
HIV and Hepatitis C Counseling, Testing, and Referrals	456	583
Hepatitis vaccination given	126	72
HIV Outreach Contacts	618	794
Clients Served	293	149
Safe Points: Needles disposed of safely (program discontinued 1-1-10)	1,250	30,400

## ENVIRONMENTAL HEALTH



Standing L—R: Dan Kramer, Beth Weber, Erin Petypiece, Mary Sue Jiras, Tamara Ewoldt, Kim Chandler, Bruce Hudson, James Lacina.

Johnson County Environmental Health programs seek to prevent or control the spread of infectious disease and to protect our environment through regulation, education, case follow-up activities, and consultation. Program activities primarily fall under three categories, Watershed Protection, Food Protection and Community Environmental Protection.

Watershed Protection consists of the Private Water Well, Transient Non-Community Well, Grants-to-Counties and Onsite Wastewater programs. These programs focus on protecting surface and groundwater supplies from contamination through permitting, inspections and the enforcement of Iowa DNR regulations.

# COMMUNITY HEALTH DIVISION Cont'd

## Communicable Disease

The Communicable Disease Follow-Up program is a county responsibility as identified in Chapter 139 of the Iowa Code. The intent of this program is to investigate reported cases of infectious diseases and institute control or prevention measures to limit the spread of disease.

Communicable Disease	FY'10	FY'09
Disease Consultations	52	487
Reportable Disease Investigations	212	239
Hours Spent on Disease Investigations	450	585
Contacts Requiring Follow-up (Individuals that were exposed to an infected person)	2,060	1771
Food Illness Complaints	19	38
Individuals Receiving TB Services	79	80
Active Cases	6	3
Inactive Cases	73	77
Hours Spent on TB Services	259	375
Immunization audits in preschools, daycare centers and K-12 schools programs reviewed	37	110
Immunization Records Reviewed	17,365	22,482
Animal bites investigated as required in Chapter 351 of the Iowa Code	118	122

## Community Health Needs Assessment/Health Improvement Planning

Johnson County has completed an eight month long community health needs assessment. Data results can be found at [www.johnson-county.com](http://www.johnson-county.com). Three to five priorities will be chosen by the community in August. Then a health improvement plan will be developed and implemented by community members.

## Health Promotion

Health Promotion programs promote health behaviors, advocate for environments that support health, and provide a wide variety of community-based health promotion services. Services provided in FY2010 include: overseeing Ryan White Part B services for southeastern Iowa; planning, implementing and evaluating educational events for those at risk for acquiring HIV; coordinating programs for persons living with HIV; providing HIV and hepatitis C counseling, testing and referral services; administration of funding for Johnson Counties Breast and Cervical Cancer Early Detection (BCCEDP) and WiseWoman Programs;

Community Needs Assessment, Public Health Nursing, Home Care Aide and Modernization. All of the Home Care Aide and part of the Public Health Nursing funds are subcontracted to the Visiting Nurse Association.

General Administration	FY '10	FY '09
Department program areas	36	39
Local Public Health Services Contract	FY '10	FY '09
Workforce Development Training Hours	445	96
Modernization Hours	613	51
Home Care Aide Hours	4,664	3,549
Public Health Nursing Visits	641	1,021
Community Needs Assessment Hours	1,312	1,470
Block Grant Administration	FY '10	FY '09
Local Contracts/Agreements	72	51
State Contracts/Agreements	31	31

## COMMUNITY HEALTH DIVISION



Second Row L—R: Diana Preschel, Trisha Schiltz  
 Front Row L—R: Dustin Wagner, Julie Bleecker, Brigitte Sliger, Annette Scheib, Andy Weigel. Not Pictured: Katie Miller, Connie Moriyama

## Community Health

Community Health programs: prevent or control the spread of infectious diseases through regulation, education, case follow-up activities, and consultation; assessment of community health needs, and health promotion activities.

## Disaster Preparedness

Disaster Preparedness program activities focus on improving public health response capabilities and communication systems in order to provide emergency services such as mass vaccinations or medications to persons in Johnson County. During the recent Novel Influenza A (H1N1) response, JCPH provided 7,765 doses of Novel Influenza A (H1N1) vaccine and managed the tracking and data entry of the 43,828 doses of Novel Influenza A (H1N1) vaccinations provided to the Johnson County community.

## A Year in Review...



Public Health employees at Annual Staff Retreat held at Kent Park Education Center.



JCPH staff and community partners discuss H1N1 tactics.



Staff returning from a wellness activity.



Soren Michael Sanders receives a Novel Influenza A (H1N1) vaccination at one of JCPH's public H1N1 Clinics in November, 2009.



Clerks Hilary Moise, Brigitte Sliger and Connie Moriyama celebrate at an employee pot luck luncheon.



Environmental Health Specialist Tamara Ewoldt, investigates a complaint.