



Promoting Health. Preventing Harm.



Amy Stanford, Pediatric Intern, and Hannah Hutchison, UIHC Dental Student, provide dental services to a family at the Infant Oral Health Clinic

Annual Report Fiscal Year 2014

Immunization Services	FY 14	FY 13
Children immunized in Johnson County	309	422
Number of vaccines administered	960	1,077
Head Start	FY 14	FY 13
Children served in Johnson County	239	338
Iowa County	22	19
Healthy And Well Kids in Iowa (hawk-i)	FY 14	FY 13
Children receiving <i>hawk-i</i> services in Johnson County	788	739
Iowa County	310	207
Presumptive Medicaid Eligibility Applications complete under <i>hawk-i</i> in Johnson and Iowa Counties	108	71
I-Smile Dental Home Program	FY 14	FY 13
Clients receiving direct dental services in Johnson & Iowa Counties	1,627	1,465
Direct services performed in Johnson & Iowa Counties	6,026	5,498

Dental Sealant Program

WIC received a grant to expand oral health services and provide dental sealants in Iowa/Johnson County schools. Two Dental Hygienists were contracted and performed 211 dental referrals, 211 oral health education, 211 oral health screenings, 211 fluoride varnish, and 146 sealants.

In accordance with Federal Law and Department of Agriculture (USDA) policy, this institution is prohibited from discriminating on the basis of race, color, national origin, sex, age or disability.

To file a complaint of discrimination, write USAD Director, Office of Adjudication, 1400 Independence Avenue, SW Washington DC 20250-9410 or call toll free (866)632-9992 (Voice). Individuals who are hearing impaired or have speech disabilities may contact USDA through the Federal Relay Service at (800)877-8339; or (800)845-6136 (Spanish). USDA is an equal opportunity provider and employer.



JOHNSON COUNTY PUBLIC HEALTH

Vision

A healthful and supportive environment where all people of Johnson County can achieve optimal physical, mental, and social well-being.

Mission

Johnson County Public Health works to assure a healthy community through community assessment and health planning, policy development and enforcement, health education, access to quality services, preventing epidemics, protecting the environment, and responding to disasters.

Director: Douglas Beardsley, MPH

Deputy Director: Tricia Kitzmann, MPH

Johnson County Public Health
855 S. Dubuque Street, Suite 217
Iowa City, IA 52240
319-356-6040 phone
319-356-6044 fax

Letter From The Director

It was when staff “gently reminded” me again that my message for the annual report was due that I stopped to reflect on how interdependent the staff of Johnson County Public Health is. Even on projects that each of us thinks he or she owns, there is always a component of the success which depends on others doing their respective jobs. While the teamwork theme may sound a bit cliché, its necessity becomes more evident every year. As we continue to prepare to meet the public health accreditation standards, new teams are being developed to coordinate the identification of documentation. Programs and Divisions are already working with teams to improve the quality of services delivered. Through the Blue Zones initiative and any one of the other 85 committees or community coalitions in which JCPH staff participate, new ideas and practices to improve the health of all Iowans are being implemented. These efforts are just the beginning as we seek to take teamwork to a new level. The Johnson County Board of Health continues to develop its team strength as a Board by adopting position statements on issues of public health importance and directing the Department in to new efforts to implement Health in All Policies. This will require additional efforts and creativity to effect positive health changes at the community and State policy level. FY 2014 has been challenging and disappointing with the loss of the Community Transformation Grant due to the diversion of those Federal funds to other areas. Federal funding of Preparedness programs is waning as well which has forced us to change the way we work with our response partners. Again, these concepts are by no means new to public health; but they continue to be encouraged, molded and used to adapt to the ever-changing landscape. The practice of teamwork at the community level will take prominence in the coming year as we conduct our next iteration of the Community Health Needs Assessment and Health Improvement Plan. Preparations are already under way for this busy and landmark year; this will be the first CHNA-HIP after the implementation of the Affordable Care Act and there are a host of unknowns that will need to be explored. I always remain optimistic and look forward to the enhanced and new partnerships that will come out of this process.

So, again, I want to thank the wonderful team of dedicated professionals who work to keep Johnson County healthy - the staff of JCPH and the Board of Health.

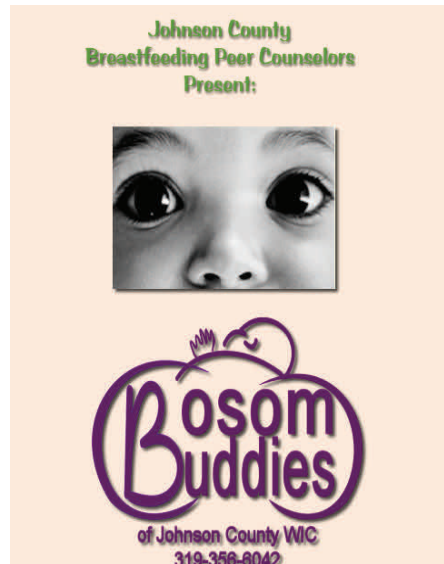
Sincerely,
 Douglas E. Beardsley, MPH
 Director

WIC/MCH DIVISION Cont'd



.Public Health clerk, Constanza Scheetz, schedules mother for follow-up clinic visit.

Child Health Program	FY 14	FY 13
Children receiving child health services including dental, physicals, labs, care coordination & dental care coordination, informing and transportation in Johnson and Iowa Counties	10,999	10,457
Children on Medicaid in Johnson County eligible for JCPH services	7,145	7,092
Iowa County	1,133	917
Maternal Health Program	FY 14	FY 13
Maternal health services received including dental, health education, care coordination, social work, nutrition, Medicaid risk assessment, Presumptive Medicaid, and transportation in Johnson & Iowa Counties	701	1,067
Maternal Health clinic caseload for Johnson and Iowa Counties	153	126



WIC/MCH DIVISION

The WIC/Maternal and Child Health (MCH) division advocates for and serves high-risk low-income families. Services available include the Special Supplemental Nutrition Program for Women, Infants and Children (WIC), breastfeeding peer counseling, Child Health, Maternal Health, immunizations, the I-Smile Oral Health Program, Head Start nursing services, obtaining medical insurance, and establishing medical/dental homes. Multiple counties are served based upon the service area designations from the Iowa Department of Public Health. Programs are focused on provision of or access to preventive health services. High-risk families are assisted with locating and accessing health services based upon individual family resources and program eligibility. Successfully accessing these services promotes overall health and stability within the family. Healthy families contribute to a positive and thriving community.

WIC FY 14 FY 13

WIC average monthly caseload in Johnson, Washington, Iowa & Cedar Counties 2,645 2,736

Breastfeeding Peer Counseling FY 14 FY 13

Number of women who received breastfeeding peer counseling in Johnson, Washington, Iowa & Cedar Counties 214 195

Nutrition Education Classes FY 14 FY 13

Number of nutrition education classes offered in Johnson County 64 49



Johnson County Public Health Nutritionist, Amy Smith, provides nutrition education to new mom.

Immunization Billing

JCPH received a grant from IDPH that provided assistance from Medicaid Billing Services to become credentialed with all the insurance companies in the area. This increased our billing capabilities and immunization options for children and families. We also purchased a new billing software program that will interface with IRIS the Immunization Registry in Iowa.

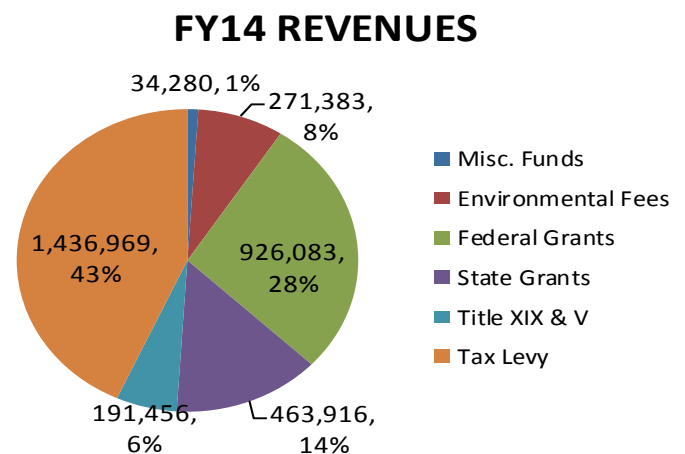
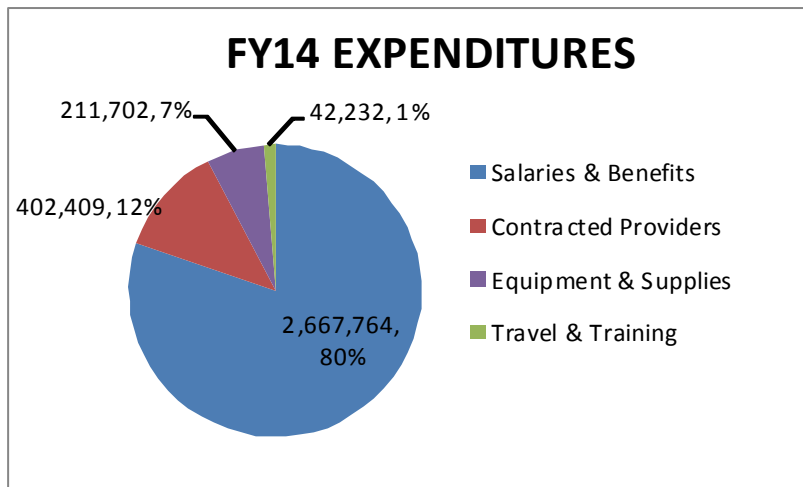
Board of Health Members 2013 – 2014

2013 Board of Health	2014 Board of Health
Peter D. Wallace, MD, MS Chairperson	Peter D. Wallace, MD, MS Chairperson
Michael P. McLaughlin, PHD Vice Chairperson	Michael P. McLaughlin, PHD Vice Chairperson
Mary Jo Meggers, RN	Mary Jo Meggers, RN
Erin E. Northway, RN, MPH	Bonnie D. Rubin, CLS, MBA, MHA
Victoria Sharp, MD, MS	Victoria Sharp, MD, MBA



Board of Health members from left to right: Mary Jo Meggers, RN; Bonnie D. Rubin, CLS, MBA, MHA; Peter D. Wallace, MD, MS; Michael P. McLaughlin, PHD; Victoria Sharp, MD, MBA.

FY14 Actual Expenditures and Revenues



FY 2014 Grants

Breastfeeding Peer Counseling	\$30,000
Community Transformation	\$65,500
Community Transformation-MCH	\$31,708
Grants-to-Counties	\$30,612
HIV CTR & Hepatitis	\$28,000
Immunization Billing	\$25,403
Immunization Services	\$21,687
IPCA-Obesity	\$10,000
Local Public Health Services	\$263,727
Maternal and Child Health	\$229,705
Medical Reserve Corps	\$3,750
Public Health Emergency Preparedness	\$158,788
School Based Dental Sealant Program	\$25,000
Tobacco	\$97,685
Tuberculosis	\$13,775
WIC	\$447,262

ADMINISTRATION DIVISION

Administration provides customer service, general reception to the public, and supports the Board of Health through general support activities. Administration is responsible for fiscal management, personnel functions and coordinates grant fund processing. Because Johnson County Public Health often collaborates with other agencies, funding from various grant sources requires administrative processes including tracking grant related correspondence, fiscal transactions and archiving appropriate fiscal documents. The Administrative Division is fully responsible for the Local Public Health Services Contract that provides funds for Disease Outbreak Investigations, Healthy Aging, Community Needs Assessment, Public Health Nursing, Home Care Aide and Modernization.

General Administration	FY 14	FY 13
Department program areas	35	37
Local Public Health Services Contract	FY 14	FY 13
Modernization Hours	116	96.78
Home Care Aide Hours*	3,988	2,776
Public Health Nursing Visits*	355	499
Community Needs Assessment Hours	240	262
Disease Outbreak Investigation Hours	1,004	2,001
Health Hazard Investigation Hours	99	138

* Subcontracted through Visiting Nurse Association of Johnson County.

ENVIRONMENTAL HEALTH Cont'd



Beth Weber, Environmental Health Specialist, conducting environmental testing of an apple press. The testing was part of an investigation into a disease outbreak eventually traced back to raw apple cider.

Community Environmental Protection consists of the Tanning, Tattoo, Swimming Pool/Spa, Hotel/Motel and Environmental Health Nuisance programs. These are contractual programs in which the authority to enforce the applicable Iowa Code chapters has been delegated to Johnson County Public Health by the Iowa Department of Public Health. Facilities are inspected to determine compliance with the regulations set forth in the Iowa Code in an effort to ensure the health and safety of the public.

Environmental Protection	FY 14	FY 13
Tattoo Facility Inspections	12	11
Tanning Facility Inspections	32	50
Pool/Spa Facility Inspections	45	81
Hotel/Motel Facility Inspections	31	29
Nuisance Investigations	141	173
Radon Test Kits Provided	289	235

Radon

Radon is a colorless, odorless, naturally-occurring radioactive gas that poses a health threat when sufficient concentrations occur in enclosed areas such as basements. Iowa has the largest percentage (71.6%) of homes above the US Environmental Protection Agency action level of 4pCi/L, in the US. Johnson County Public Health began offering radon test kits for sale to the public at cost in 2011. Sales of radon test kits have increased each year. The test kits cost just \$5 and are available to pick up in person or by mail.

ENVIRONMENTAL HEALTH

Johnson County Environmental Health programs seek to prevent or control the spread of infectious disease and to protect our environment through regulation, education, case follow-up activities, and consultation. Program activities primarily fall under three categories, Watershed Protection, Food Protection and Community Environmental Protection.

Watershed Protection consists of the Private Water Well, Transient Non-Community Well, Grants-to-Counties and Onsite Wastewater programs. These programs focus on protecting surface and groundwater supplies from contamination through permitting, inspections and the enforcement of Iowa DNR regulations.

Watershed Protection	FY 14	FY 13
Onsite Wastewater Permits Issued	114	133
Onsite Wastewater System Inspections Conducted	341	473
Private Water Well Permits Issued	66	62
Private Water Well Inspections Conducted	117	155
Transient Non-Community Wells Inspected	44	41
Time of Transfer Inspections Conducted	167	135
Grants to Counties	FY 14	FY 13
Plugged wells	21	26
Renovated wells	1	2
Water samples	138	139
Zoning	FY 14	FY 13
Zoning & subdivision staff reports submitted	62	48
Conditional use staff reports submitted	16	15

The Food Protection program is a contractual program in which the authority to enforce the Iowa Food Code has been delegated to Johnson County Public Health by the Iowa Department of Inspections and Appeals. Johnson County Public Health licenses and inspects a variety of food facilities to ensure compliance with the Food Code.

Food Protection	FY 14	FY 13
Food Licenses Issued	1,068	1,114
Food Facility Inspections	1,803	1,786

ADMINISTRATIVE DIVISION Cont'd

Block Administration Grant	FY 14	FY 13
Local Contracts/ Agreements	59	57
State Contracts/ Agreements	35	35

COMMUNITY HEALTH DIVISION

Community Health

Community Health programs create an environment that assists people in making healthy choices where they live, learn, work and play. Through promotion, education and regulation we strive to prevent diseases and promote health.

Emergency Preparedness

Emergency Preparedness program activities focus on improving public health response capabilities and communication systems in order to plan for, respond to and recover from public health emergencies in Johnson County.

Communicable Disease (CD)

CD Follow-Up is a county responsibility per Iowa Code. The program investigates cases of infectious diseases and institutes prevention measures to limit the spread of disease. JCPH investigated two clusters of cryptosporidiosis cases in the fall of 2013. The first group was mostly among children who visited swimming pools. The second cluster was linked to consuming unpasteurized apple cider.

Communicable Disease	FY 14	FY 13
Disease Consultations	212	217
Reportable Disease Investigations	227	241
Hours Spent on Disease Investigations*	1,004	2,001
Contacts Requiring Follow-up (Individuals that were exposed to an infected person)*	298	2,240
Food Illness Complaints	31	30
Food Illness Outbreak Investigations	1	7
Other Illness Outbreak Investigations	1	1
New Clients Receiving TB Services**	50	36
New TB Disease Cases	10	4
New Latent TB Infection Clients	40	32
Hours Spent on TB Services	632	420
Immunization audits in preschools, day-care centers and K-12 schools programs reviewed	101	71
Immunization Records Reviewed	20,979	19,599
Animal bites investigated	88	79
Vaccinations (not counted in other section)	25	26

*The number of contacts requiring follow-up and the number of hours spent on disease investigations was lower in FY 2014 partially due to changes in the recommendations for persons exposed to pertussis.

**The measure for TB services and LTBI are different than the FY13 annual report. FY13 numbers for this report have been changed to make them comparable.

Community Health Needs Assessment/Health Improvement Planning (CHNA/HIP)

Johnson County selected four health improvement priorities from the five year Community Health Needs Assessment. Those priorities are access to care, alcohol abuse reduction, mental health promotion, and obesity reduction. Updated annually, the Health Improvement Plan includes prior year completed objectives and new goals for the upcoming year. Please go to www.johnson-county.com to see the most recent Health Improvement Plan (HIP).

Health Promotion

Health Promotion programs promote health behaviors, advocate for environments that support health, and provide a wide variety of community-based health promotion services. Services provided in FY14 include: planning, implementing and evaluating educational events for those at risk for acquiring HIV; providing HIV and hepatitis C counseling, testing and referral services; tobacco use prevention and control; providing an Employee Wellness Program for Johnson County employees; and implementing health promotion programs and coalitions, such as the Alliance for Healthy Living. Public Health is represented on the Power 9, Worksite, Schools, Community Policy and Walking School Bus committees for the Iowa City Blue Zones Project.

Health Promotion	FY 14	FY 13
Number of employees who participated in Worksite Wellness Programs	336	333
Participation Rate	61%	60%
HIV and Hepatitis C Counseling, Testing, and Referrals	691	483
Hepatitis vaccination given	65	102
HIV Outreach Contacts	855	734
Mpowerment Outreach Contacts	2,474	839

Tobacco Grant

Johnson County Public Health works with community partners to prevent the initiation of tobacco use by youth, reduce exposure to secondhand smoke, and promote tobacco cessation. Main objectives include creating youth groups that focus on tobacco prevention, encouraging business owners to adopt smoke-free and tobacco-free policies for their properties, and promoting the free cessation hotline (Quitline Iowa). Community coalitions that address tobacco use are currently active in Johnson, Iowa, and Poweshiek counties.

Mpowerment

Mpowerment Iowa City (MPowerIC) is Johnson County's community based group for young gay and bisexual men dedicated to creating an educated, empowered, and supportive community with a focus on sexual responsibility and risk reduction.

Apartment turnover costs can be two to seven times greater when smoking is allowed.

Protect your residents AND your investment, consider adopting a smokefree policy!

- **Keep up with the market demand:** 75% of surveyed Iowa renters prefer smokefree housing. 39% would even pay up to \$50 more to rent or to live in a smokefree property.[®]
- **Save time and money** cleaning and reduce fire risk and liability.
- **Protect tenants** from the dangers of secondhand smoke.

Smoke-Free Homes
www.Smoke-FreeHomes.Iowa.gov

Source: Smoking Cessation: Rental Activities in Great Lakes 2011. The info provided with funding from the Iowa Department of Public Health Division of Tobacco Use Prevention and Control.

To learn more about adopting a smokefree policy and the FREE resources available, contact Johnson County Public Health at (319) 356-6040 or JCPublicHealth@co.johnson.iowa.us

www.johnson-county.com/health

Johnson County Public Health
855 S. Dubuque St.
Iowa City, IA 52240

Example of outreach to apartment owners and managers to encourage implementation of smoke-free policies.

Community Transformation Grant (CTG)

CTG completed year three, with the announcement that the CDC has reallocated funding and would no longer be supporting years four and five. This past year, CTG received a mini-grant to support a Walking School Bus at Van Allen Elementary, worked with the Johnson County Food Systems Council to collect and analyze data on over 100 food indicators, provided funding for a trail kiosk in Tiffin and bike racks in Lone Tree and Hills, and held two classes for citizens to manage their chronic diseases through a renewed Better Choices/Better Health program. Plans are to continue the CTG initiatives through current staffing and volunteers.



Diana Kremzar, Health Educator leads a Walking School Bus at Van Allen Elementary.